

COM/LPT port expansion for Shuttle All-in-One PC's

The Shuttle accessory PCL71 is compatible with the following Shuttle XPC All-in-One Series: X50 (V4-V8) and P90U/P92U. It will add two serial (COM) and one parallel (LPT) port to the back panel of the PC.

Feature Highlight

Product	<ul style="list-style-type: none"> Name: Shuttle Accessory PCL71 UPC code: 887993800011
External ports	<ul style="list-style-type: none"> 2x Serial port RS232 "COM 1" is switchable to RS422/RS485 (Sub-D, 9 pins, male) 1x Parallel port (Sub-D, 25 pins, female)
External power	<ul style="list-style-type: none"> Both serial ports can provide an auxiliary voltage supply of either 5V or 12V
Scope of delivery	<ul style="list-style-type: none"> Printed Circuit Board (PCB) 4 screws Ribbon cable Type label sticker (Rating label) Multi-language quick installation guide (EN, DE, FR)
Compatibility	<ul style="list-style-type: none"> Compatible with the following Shuttle XPC All-in-One products: <ul style="list-style-type: none"> - with 15.6"-Display: X50V4, X50V5(U3), X50V6(U3), X50V7(U3), X50V8(U3) - with 19.5"-Display: P90U(x) and P92U(x)

Shuttle XPC Accessory PCL71



Shuttle XPC aio P90U/P92U/X50 series. Images for illustration purposes only.

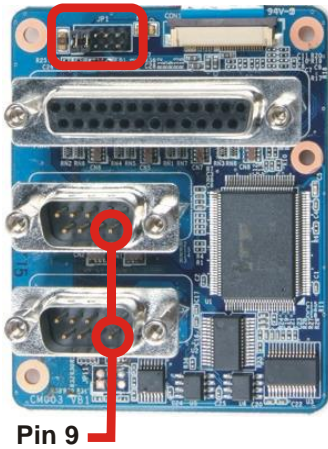


Shuttle All-in-One PC without PCL71



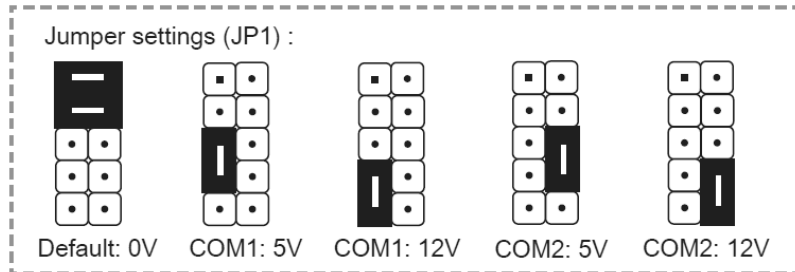
Shuttle All-in-One PC with PCL71 installed

Jumper setting
Jumper JP1



Power over serial port

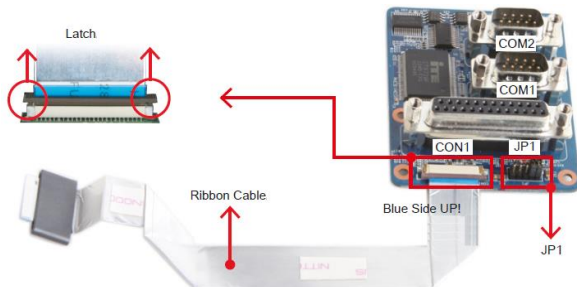
Both serial ports can provide a voltage supply of either 0V, 5V or 12V over Pin 9 (Ring pin) of the D-Sub connector depending of the jumper setting. This voltage can be used to supply external devices. With jumper JP1 you can configure the voltage.



Quick Installation Guide:

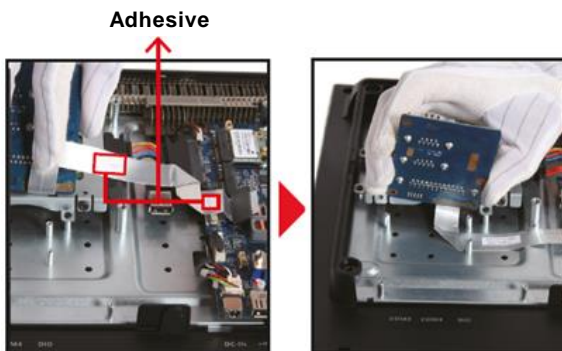
Due to safety reasons, please turn off your computer completely first and unplug it from the adapter.

1. Remove the cover on the back of the X50V4 first, unscrew four screws of the stand mount and remove the stand.
2. Unscrew four screws of the back cover and remove it.
3. Connect the ribbon cable to "CON1", then slide two latches into the lock position. Pull up two latches of "CON1" first, then plug the ribbon cable to "CON1".

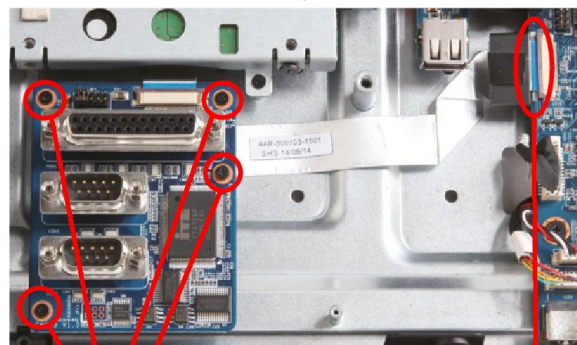


Jumper settings/ Jumper-Konfiguration/ Reglage des cavaliers (JP1) :

4. Tear off the adhesive membrane, fold and fix the adhesive ribbon cable to the chassis rail.



5. Tighten the PCL71 COM/LPT Port with four screws.
6. Connect the ribbon cable to "CON3", then slide two latches into the lock position.



4 Screws

Blue Side UP

7. Remove the back cover original rating label, then paste the rating label which sits in the accessory box.
8. Replace the back cover.
9. Refasten the stand and the back cover with eight screws.
10. Replace the cover, complete.

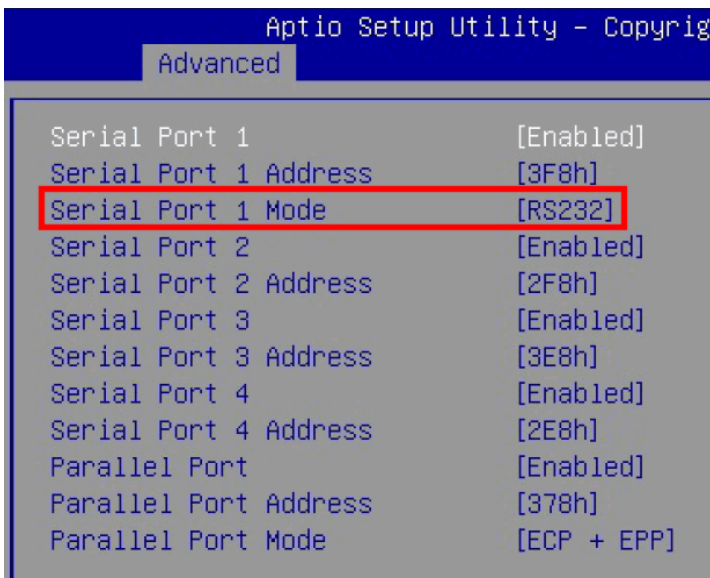


RS232 / RS422 / RS485 setting in the BIOS:



The Shuttle XPC Accessory PCL71 provides two serial ports in the back panel which support the RS232 mode.

The serial port "COM 1" can also be switched to RS422/485 mode in the BIOS.



Enter the BIOS setup and go to the "Advanced" tab. Change the option "Serial Port 1 Mode" to the desired setting for the "COM 1" port: RS232, RS422 or RS485.

© 2022 by Shuttle Computer Handels GmbH (Germany). All information subject to change without notice. Pictures for illustration purposes only.